

Environmental certification of Pecorino Romano DOP.

The product category rules for the Made Green in Italy brand of hard sheep's milk cheeses.

Gianfranco Gaias, Enrico Vagnoni¹, Laura Zanchi², Alessandra Zamagni², Pierpaolo Duce¹,

¹ Institute of BioEconomy, National Research Council, Sassari, Italy

² Ecoinnovazione srl, Bologna, Italy

Gianfranco Gaias

Consorzio Tutela Pecorino Romano DOP

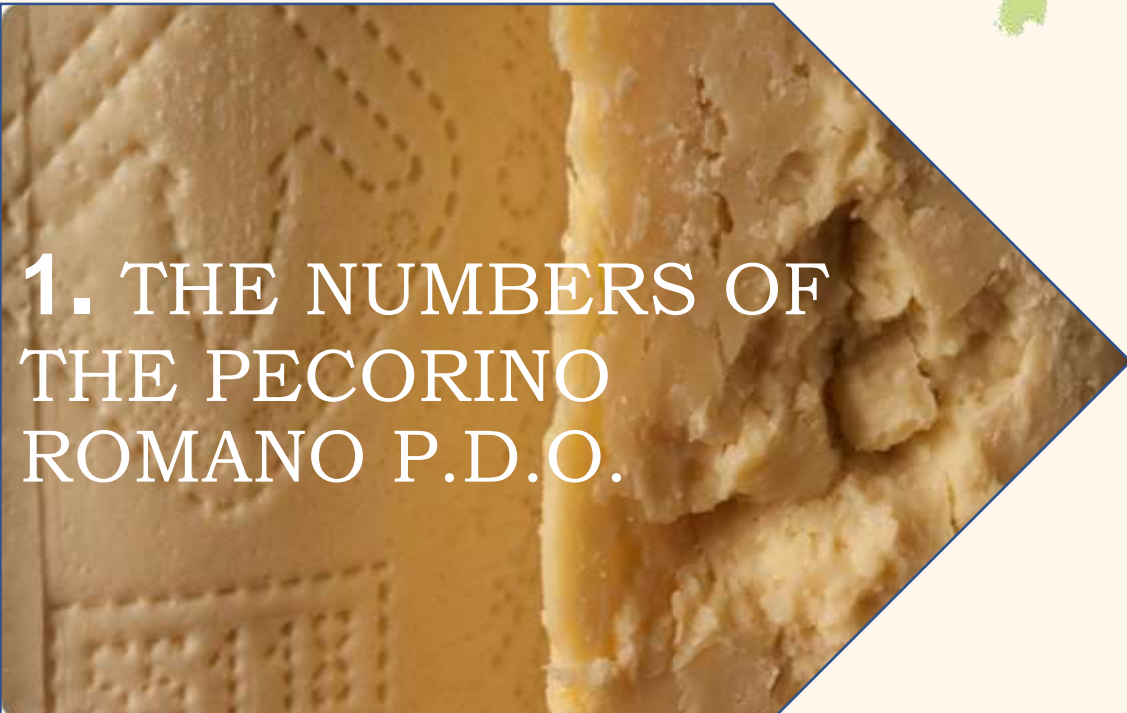
FAO Headquarter

Wednesday, 19th February 2025

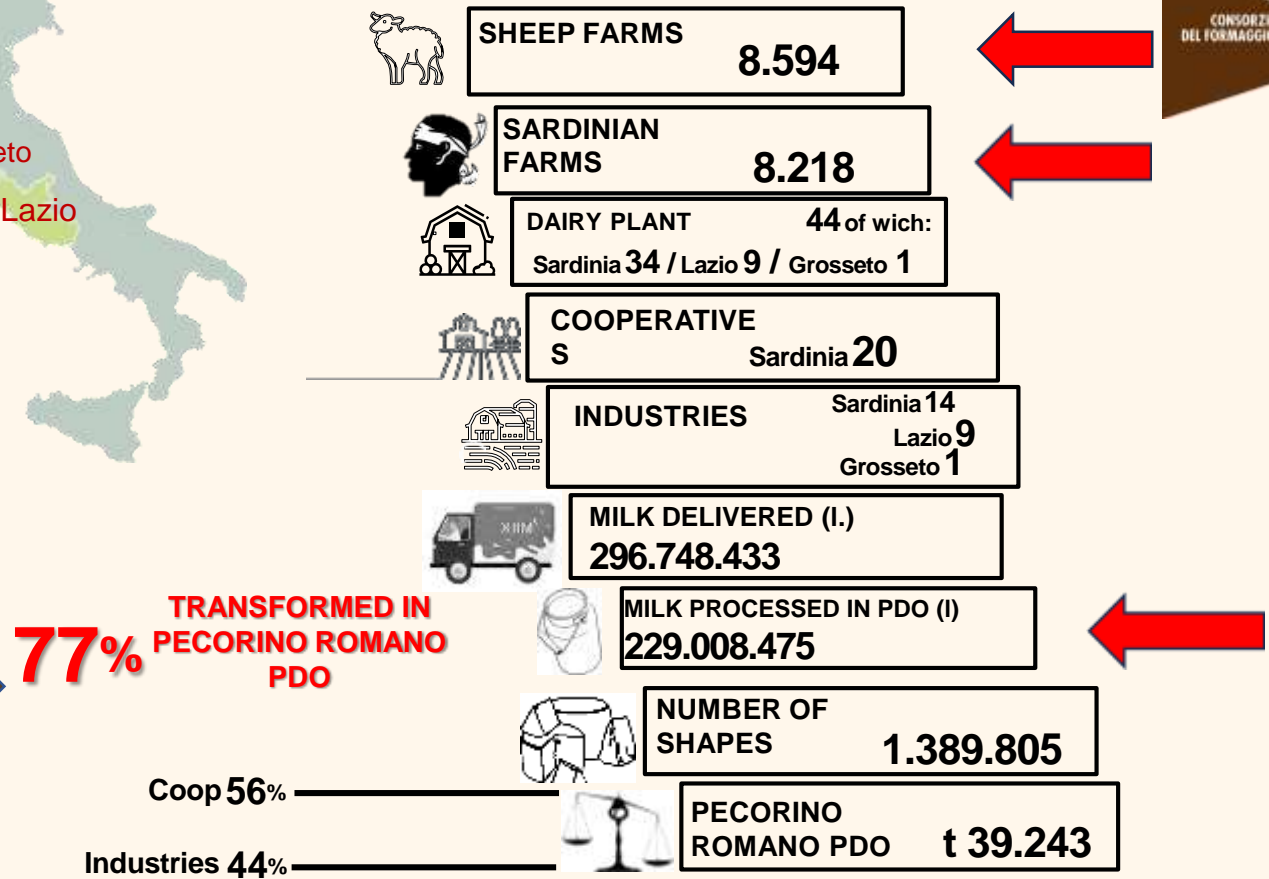
ROMA

The Pecorino Romano PDO cheese (EU Regulation N. 1030/2009, 2009)

Hard cheese, cooked, made with fresh and not pasteurized (at least thermised) whole sheep's milk, derived exclusively from farms located in the regions of Sardinia, Lazio and the province of Grosseto in Tuscany



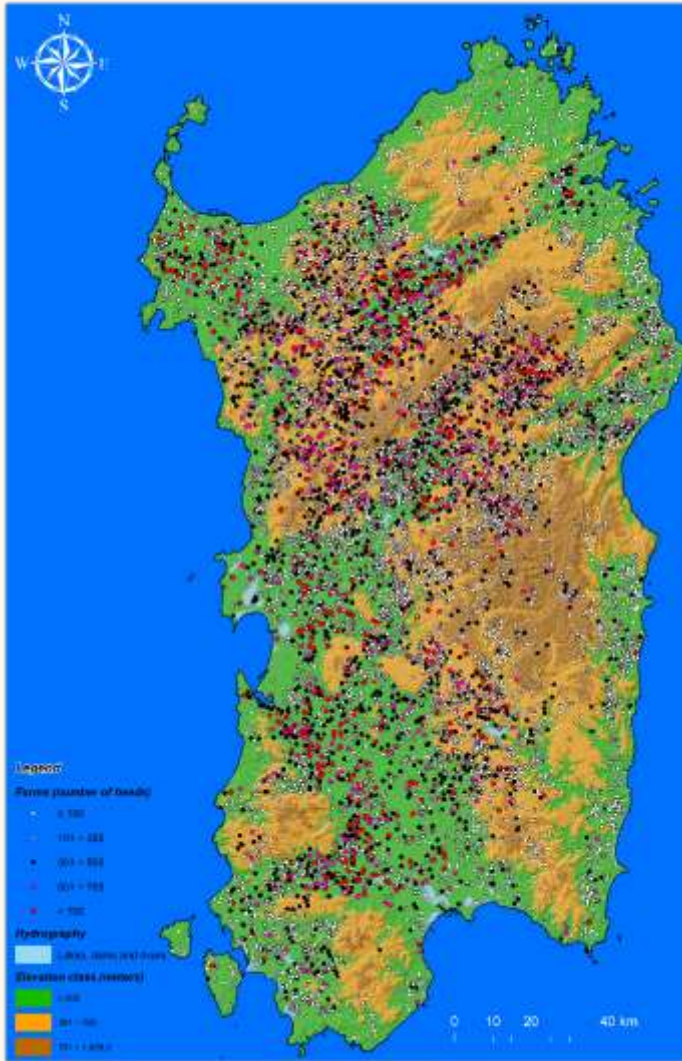
1. THE NUMBERS OF THE PECORINO ROMANO P.D.O.



*Pecorino Romano DOP production system, - October-July 2023/2024
Source: Consortium Pecorino Romano on data certified by the IFCQ

The Sardinian sheep sector

Relevance & numbers



- 2,5 M heads (\approx 5% of the EU sheep population)
- \approx 9.000 active sheep farms and 50 dairy factories
- 0,32 Mt/year milk: \approx 13% of EU & 70% IT



The Sardinian sheep cheese production

50 kt/year of cheese, 55-65% PDO

- 50-60% Pecorino Romano PDO*
- 4 % Pecorino Sardo PDO
- 1% Fiore Sardo PDO

- 16% Pecorino Sardo no PDO
- 20% Fresh cheeses
- \approx 7 kt/year ricotta



* the main European sheep cheese (50%)

Pecorino Romano PDO - Environmental sustainability

Project co-funded by the **LIFE** programme of the European Union to **support the diffusion of the Made Green in Italy scheme**

**Started in September 2019
and ended in April 2023.**



Partner



**Supply chains
- Product**



Pecorino Romano PDO

Coffee

Onion of Medicina

Finished leathers

Ice cream

Italian seasonal leavened cakes

Non-puff pastries

Wooden windows

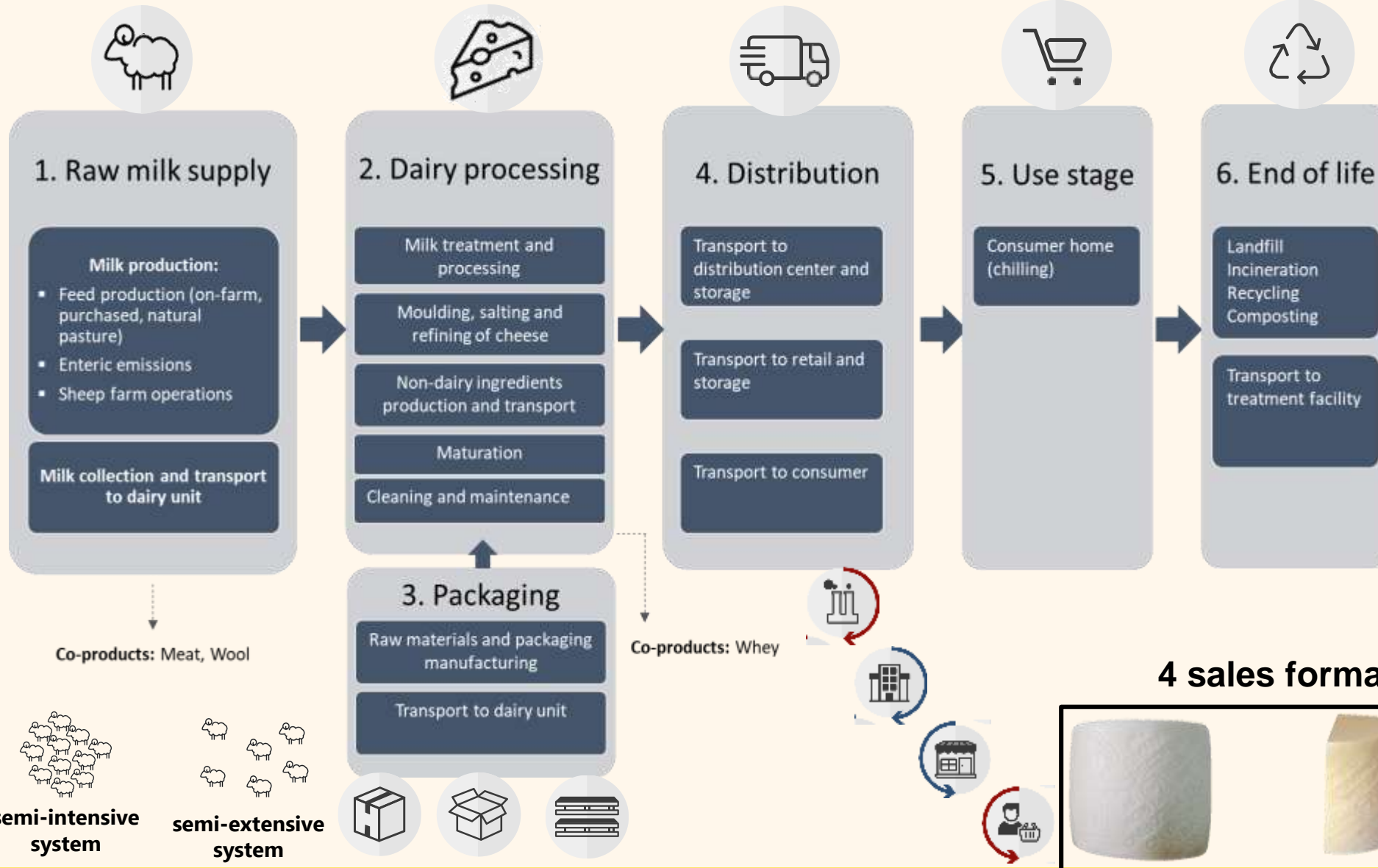
System boundaries diagram for hard cheese from sheep milk



Functional unit:
10 g SS Pecorino Romano PDO cheese

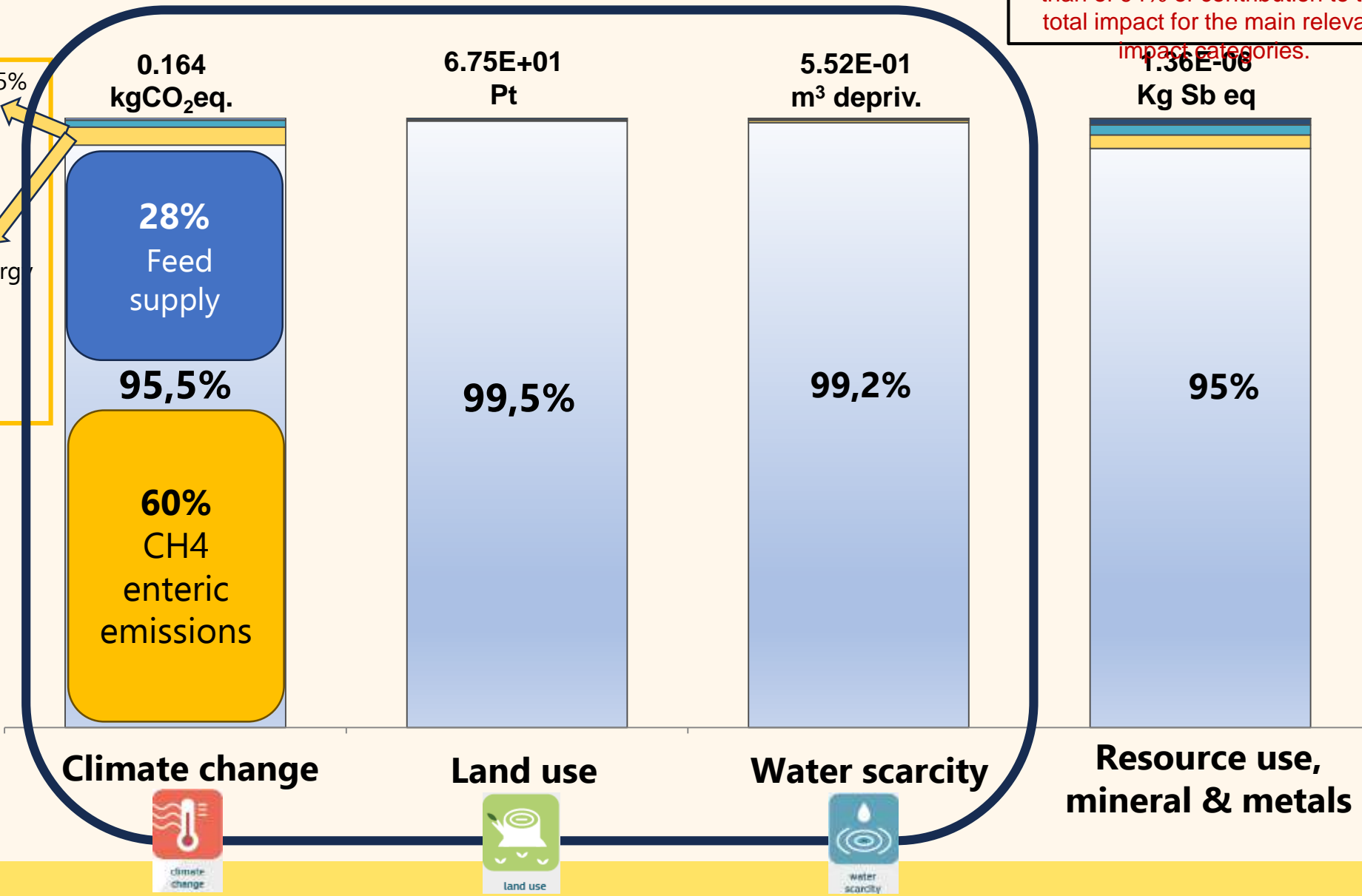
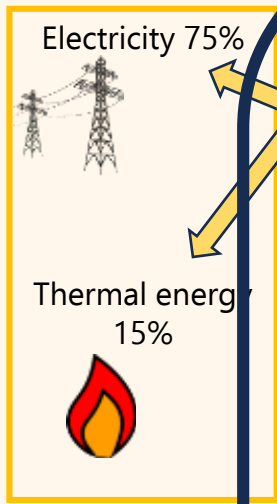
Method:
Environmental Footprint 2.0 (adapted) (Fazio et al., 2018)

Software:
SimaPro Analyst v9.1.1 (PRè, 2020)



MAIN IMPACT CATEGORIES

Milk production, resulted the dominant impacting stage with more than of 94% of contribution to the total impact for the main relevant impact categories.



- Sheep milk production
- Dairy processing
- Packaging
- Distribution
- Use
- End of life



PRODUCT CATEGORY RULES MGI

On 16th September 2024 it was published by Ministero dell'Ambiente e della Sicurezza Energetica:

RCP "Formaggi ovini a pasta dura" (Representative product: - validity until the 16th september 2028).

https://www.mase.gov.it/sites/default/files/archivio/allegati/impronta_ambientale/rcp_formaggi_ovini_pasta_dura_0.pdf



ADDITIONAL ENVIRONMENTAL INFORMATION

Sheep farming, both semi-extensive and semi-intensive systems, has a strong **multi-functional** character and numerous implications with important **ecosystem services**

- Carbon sequestration
- Maintenance of biodiversity
- Regulation of soil erosion
- Maintenance of rural landscape

- Reduction of fire risk
- Maintenance of cultural traditions
- Provision of tourist-recreational services



Conclusions/Challenges/Opportunities



LCA studies allowed to identify key areas for **environmental improvement** that include both sheep farming and dairy plant



***Public policies** are needed for improving **efficiency improvement** in a tailored route*

*A transparent and scientific evidence-based **environmental communication** should help both producers and consumers (as well as consumers!)*

Support** for small and medium-sized enterprises in adopting **environmental schemes

*Strong involvement of **farmers** in environmental **impact mitigation** actions supported by specific **sector policies***

Investments** in eco-innovative solutions (energy supply) for **dairies plants

***IG Regulation (EU) 2024/1143.** Action to improve the performance of the **geographical indication**, in terms of environmental, social and economic sustainability*



**LIFE
MAGIS**

MAde Green in Italy Scheme



The LIFE MAGIS project has received funding from the LIFE Programme of the European Union

This study is conducted within LIFE MAGIS “Made Green in Italy scheme” project supported by the LIFE financial instrument of the European Union (LIFE18 GIE/IT/000735).



CONSORZIO PER LA TUTELA
DEL FORMAGGIO PECORINO ROMANO



Thank you for attention

GIANFRANCO GAIAS

Consorzio per la Tutela del
Formaggio Pecorino Romano

giangaias@pecorinoromano.com