

GEOGRAPHICAL INDICATIONS FOR CRAFT AND INDUSTRIAL PRODUCTS AT EUIPO

Katarina Kompari
19/02/2025

STATE OF PLAY

CRAFT



AGRI





CRAFT AND INDUSTRIAL PRODUCTS

Regulation (EU) 2023/2411

NEW



WINE, SPIRIT DRINKS AND AGRICULTURAL PRODUCTS

Regulation (EU) No 2024/1143



WINES

Regulation (EU) No 1308/2013



SPIRIT DRINKS

Regulation (EU) 2019/787



**ENTRY INTO
FORCE**
16.11.2023

OFFICE
GIportal/Union Register
List of Control Competent Authorities

SET UP
Rules of Procedure
Nominations

APPLICABILITY
1.12.2025

IT SYSTEM

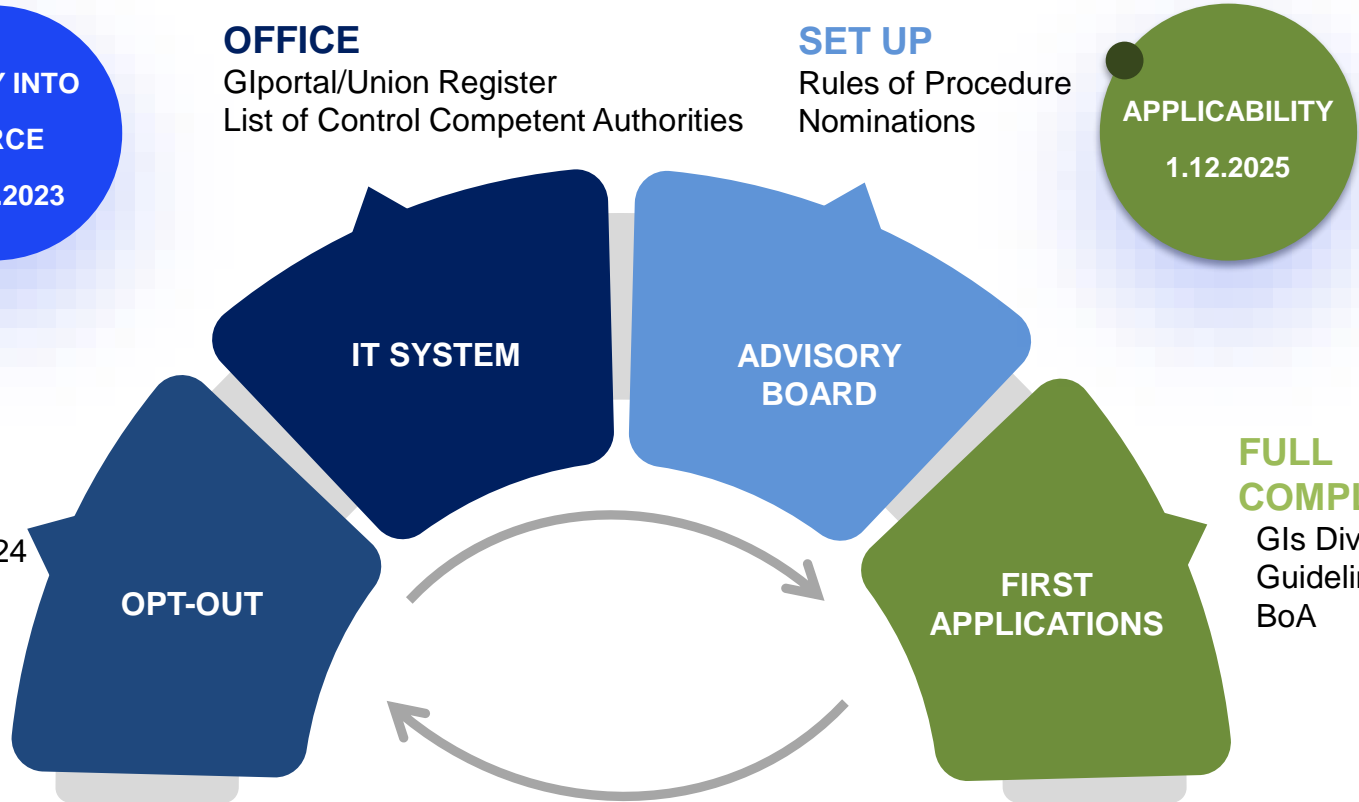
**ADVISORY
BOARD**

COMMISSION
MS to request
by 30 November 2024
[12 months]

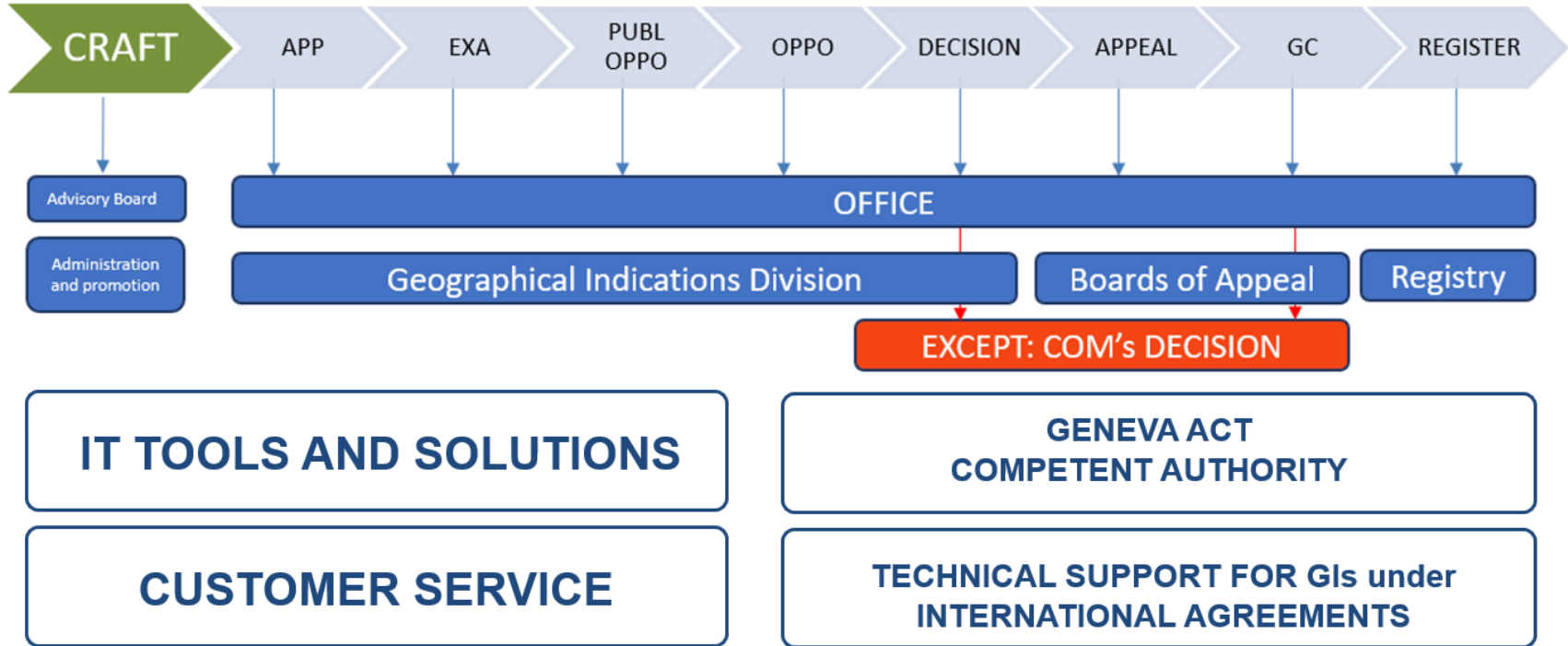
OPT-OUT

**FIRST
APPLICATIONS**

**FULL
COMPLIANCE**
GIs Division
Guidelines
BoA



EUIPO'S FUTURE SERVICE



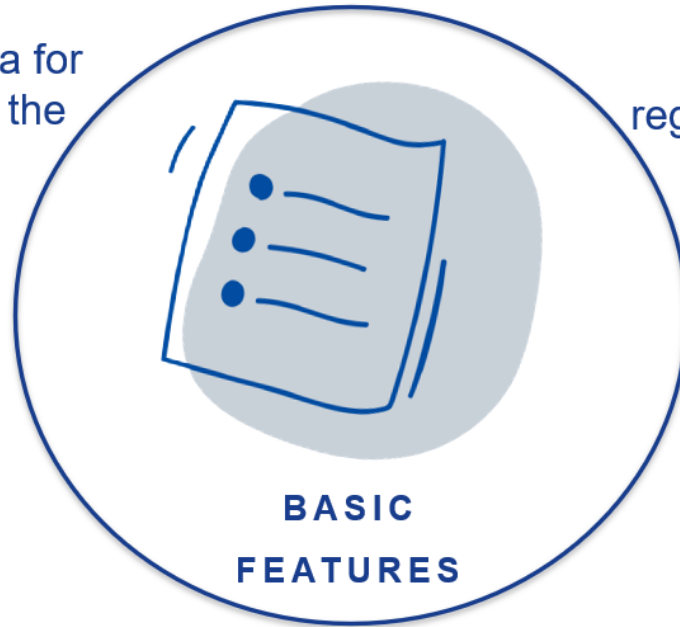
BASIC FEATURES OF THE CI GI SCHEME



Balanced criteria for protection as to the territorial link



Flexibility in control and enforcement



Two-stage registration procedure (National – Union)



EU system replacing national CI GI rights



EUIPO as 'EU authority in charge'

COMPOSITION OF THE 'EU COMPETENT AUTHORITY'



GIs DIVISION

BOARDS OF APPEAL

ADVISORY BOARD

PROCEDURES BEFORE THE OFFICE



**UNION LEVEL
PROCEDURES**

DIFFERENT TYPES OF PROCEDURES



Standard



Direct



3C

SINGLE DOCUMENT

	Name	Any specific labelling rule	
	Description of the product	Geographical area	
	One of the production steps	Details establishing the link	
	Packaging rules	Product Specification (ref)	

TYPE OF APPLICANTS



PRODUCER GROUP

SINGLE PRODUCER

LOCAL OR REGIONAL
AUTHORITY OR PRIVATE
ENTITY



APPLICANT



Contribute to ensuring quality, reputation and **authenticity** of their products are **guaranteed** on the market by monitoring the use.



Take measures to **enhance the value of products** and, where necessary, take steps to prevent or counter any measures which are, or risk being, detrimental to the image of those products.



Take action to ensure adequate **legal protection** of the GIs and of the intellectual property rights that are directly connected with them.



**PRODUCER
GROUPS**

Develop **information and promotion activities** aimed at communicating the value-adding attributes of the product to consumers.



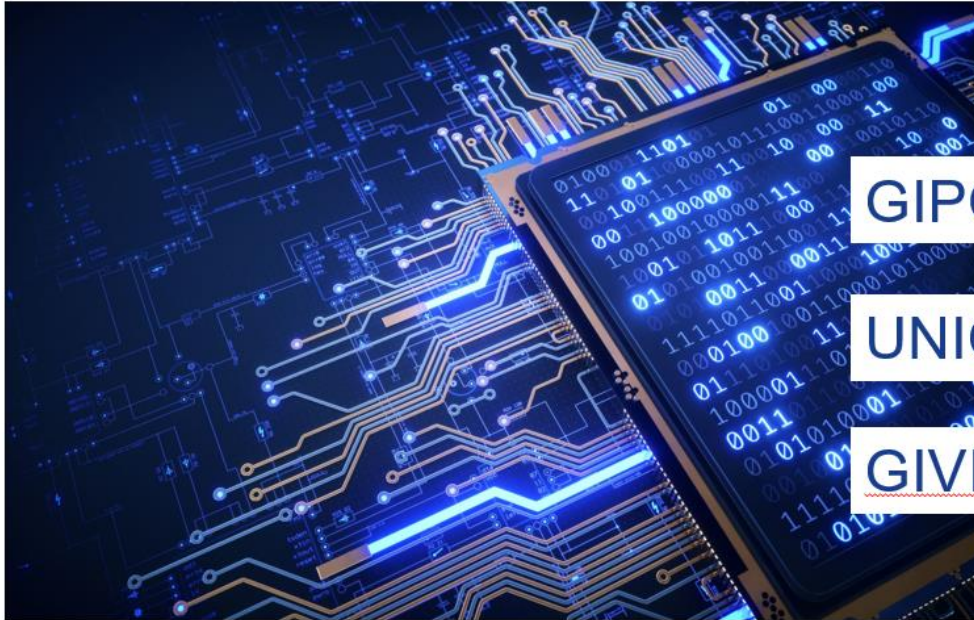
Develop activities related to **ensuring compliance** of a product with its specification.



Take action to **improve the performance** of the scheme, including developing economic expertise, carrying out economic analyses, disseminating economic information on the scheme and providing advice to producers.



OFFICE DIGITAL SYSTEM



GIPTAL – e-filing system

UNION REGISTER

GIVIEW – Database

GIPORTAL



Digital System



24 EU
languages



Accessible to
the public



GI e-filing



Forms
available



Available to MS



GI REGISTER



Established
and maintained
by the Office



Accessible to
the public



Public
information



Protected GI



Type of product



Name of applicant



Decision



Country / countries
of origin of the product



GVIEW

OFFICE DIGITAL SYSTEM



Established
and maintain
by the Office



accessible to
the public



Public
information



Member States
access



Producer groups
access



IPEP link



Extended data



International agreements
/ Geneva Act



FAQs <https://www.euipo.europa.eu/en/gi-hub>

Welcome to our new website. Help us to improve it by giving us feedback.

Next steps



What happens with national existing GIs for craft and industrial products?

The Regulation on GI protection for craft and industrial products establishes a Union system of protection.

Therefore the national specific protection for GIs for craft and industrial products shall be converted to EU-wide rights through a specific request by the respective Member State pursuant to Article 70(2) of the CIGI Regulation.

The national GIs will then be examined in accordance with Article 70(4) of the CIGI Regulation and registered in the Union Register of GIs for craft and industrial products.



About the Advisory Board

The Advisory Board is created by the CIGI Regulation and has a two-fold role:

- Providing general opinions on assessing quality criteria, establishing the reputation of a product, determining the generic nature of a name, the link between a product's characteristics and its geographical origin and assessing the risk of confusing consumers; and
- Providing opinions in particular GI applications when so requested by the Geographical Indications Division or the Boards of Appeal, or at the request of the Commission.



Control of GIs for craft and industrial products

Controls are an essential part of the GI scheme and they include the following:

- Verification that a product designated by a GI is in compliance with the corresponding product specification;
- Monitoring of the use of GIs in the market, including electronic commerce.

Each Member State shall designate one or more competent authority that is responsible for those controls.





www.euiipo.europa.eu

 [@EU_IPO](https://twitter.com/EUIPO)

 [EUIPO](https://www.linkedin.com/company/euiipo)

 [EUIPO.EU](https://www.facebook.com/EUIPO.EU)

 [@EUIPO](https://www.instagram.com/EUIPO)

 [EUIPO](https://www.youtube.com/EUIPO)

THANK YOU